

CORPORATE OFFICE

Level 1
32 Oxford Terrace
Christchurch Central
CHRISTCHURCH 8011

Telephone: 0064 3 364 4160
Fax: 0064 3 364 4165
carolyn.gullery@cdhb.health.nz

24 January 2020

9(2)(a)

RE Official Information Act request CDHB 10228

I refer to your email, dated 18 November 2019, requesting information under the Official Information Act from Canterbury DHB in relation to the preliminary design for the new mental health facilities at Hillmorton Hospital (to house services currently at PMH) as mentioned in the CEO update dated 18 November 2019. Specifically:

1. Any concept design drawings/illustrations of any kind showing the new facilities.

We attach (**Appendix 1**) some site plans and architectural drawings that have been provided to us from the project teams. These remain subject to the design process and are therefore subject to change. They do, however, illustrate what the new facilities including façade and materials will likely look like.

2. Any reports/documents produced as part of the preliminary design process.

The project team have engaged consultants across all disciplines (including architectural, mechanical, electrical, fire, structural and geotechnical). There are significant amounts of information and correspondence evolving from the design process to date across all disciplines. Design and design documentation is also still being developed. Once sufficiently developed, Canterbury DHB will engage in a competitive procurement process to engage its building contractors. As such, Canterbury DHB is withholding the requested information at this stage pursuant to sections 18(f) *substantial collusion or research*; and 9(2)(b)(ii) *commercial prejudice*. Canterbury DHB does not want to release information that is yet to be consolidated, finalised and costed and therefore remains subject to change.

3. Any correspondence from the Clinical Leaders Group to CDHB management sent in 2019 regarding the new facilities.

There is no documented correspondence to this effect from CLG to Canterbury DHB management.

I trust that this satisfies your interest in this matter.

You may, under section 28(3) of the Official Information Act, seek a review of our decision to withhold information by the Ombudsman. Information about how to make a complaint is available at www.ombudsman.parliament.nz; or Freephone 0800 802 602.

Please note that this response, or an edited version of this response, may be published on the Canterbury DHB website after your receipt of this response.

Yours sincerely

A handwritten signature in black ink, appearing to read 'Carolyn Gullery', with a long, sweeping horizontal line extending to the right.

Carolyn Gullery
Executive Director
Planning, Funding & Decision Support

Exterior Materiality



IFSC - SRHS | Main Entry | Outpatients



Brick
School



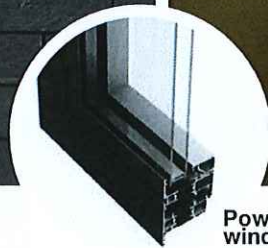
Laser-cut powdercoat
aluminium sunshade screen
Front Entry



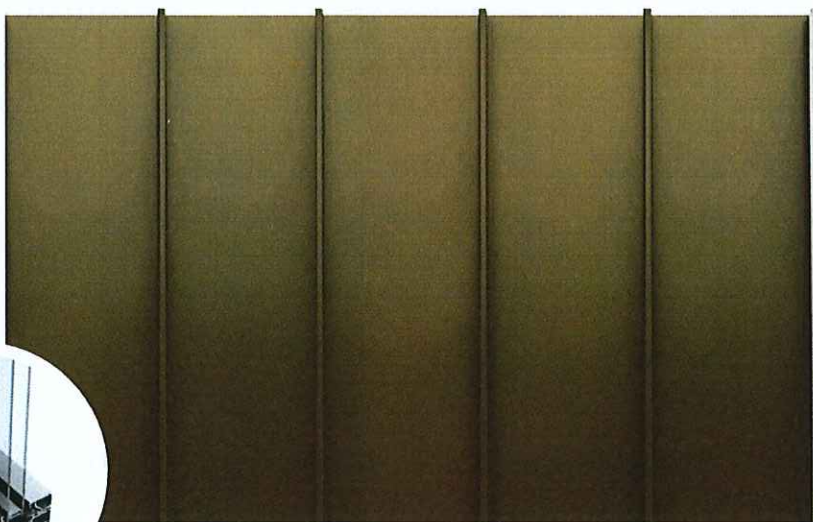
Fine through-colour finishing render
on concrete blockwork
Front Entry 'Frames'



Natural slate cladding
Ground Floor Outpatients



Powdercoated aluminium
window joinery
General

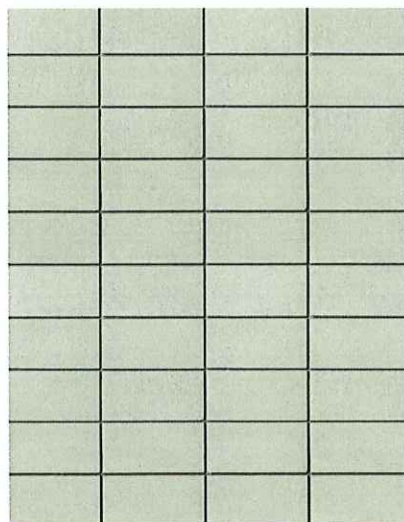


Long run standing seam cladding -
zincalume or powdercoated aluminium
First Floor Administration

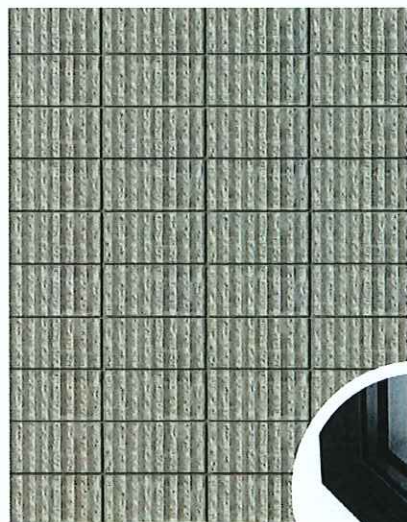
Exterior Materiality



IFSC - SIEDS Bedroom Wing



Stack-bond honed concrete blockwork with colour oxide
Bedroom wing type 1



Fluted concrete blockwork with colour oxide
Bedroom wing type 1 spandrel



Stained or pre-weathered vertical timber cladding
Spandrel in selected feature areas



Fine through-colour finishing render on concrete blockwork
Bedroom wing type 2



Rough (and brushed) through-colour finishing render on concrete blockwork
Bedroom wing type 2 spandrel



Example of changing render finish on the same facade

Exterior Materiality



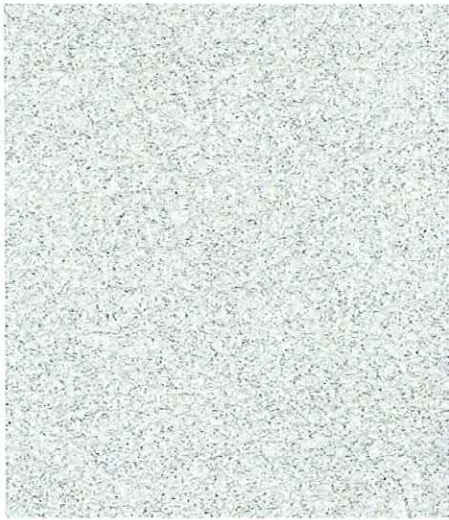
HCN | Main Entry



Stained or pre-weathered vertical timber cladding
Spandrel and cladding in selected feature areas



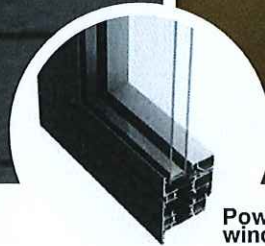
Powdercoated steel extrusions
Entry porch and sunshading fins



Fine through-colour finishing render on concrete blockwork
Secondary Forms



Natural slate cladding
Entry Form



Powdercoated aluminium window joinery
General



Long run standing seam cladding - zincalume or powdercoated aluminium
First Floor Form

Overall Landscape Plan
H&C and IFSC

