



Thank you for keeping our system working during challenging times

Last week was a really challenging week for the whole of our health system.

RSV is a winter challenge we're used to, but with the COVID-19 lockdowns and borders closed, we missed the usual infections amongst our children. And this year, we're being doubly hit - and hit hard. While there are some indications we are over the 'hump' of RSV in terms of calls to Healthline for advice, which have dropped significantly in recent days, this illness has a long tail, as we are still seeing marked increases in presentations at our Urgent Care clinics and Emergency Department, a huge shout out to Primary Care, to the Emergency Department and to all our paediatric and intensive care teams, Acute Medical Assessment Unit (AMAU) – everyone really, you all did an amazing job. I had a wander around Waipapa one evening last week with Becky Hickmott, Executive Director of Nursing and Helen Skinner the Chief Medical Officer and I was just amazed at the teamwork going on. Thank you to all who did extra shifts, stayed those long days and carried patient loads that I'm sure you weren't normally used to delivering or are normally expected of you.

It's flu vaccine time

Last week, I had my flu vaccine. Flu vaccines are available to all Canterbury DHB staff so please take advantage of that. Flu is prevalent in Australia, along with COVID-19 unfortunately, but with borders still semi-permeable at the moment, the reality is, it's quite likely to come to New Zealand at some stage, so please book your flu vaccination and get yourself protected. Details of clinic locations and times are available on [PRISM](#).



Registered Nurse Allison McKinnon receives her flu vaccination from Registered Nurse Raechel Keepa at Burwood Hospital



One of our vaccination teams, from left, Registered Nurse Barb Tame, Occupational Health Nurse Maries Villa, Staff Nurse Linda Wright and Occupational Health Nurse Janet Tweedy

In this issue

- > Regulars – Kōrero ai... pg 3-5
- > Hyperbaric Unit accredited for straining... pg 6

- > New X-ray machine for the Chatham Islands... pg 7
- > Māia Foundation Maternity chair fundraising update... pg 8

- > One minute with... Jo Domigan, Head of Equity, Recruitment and People Partnering... pg 9
- > Notices – Pānui... pg 10-16

And speaking of vaccine, if you haven't had both of your COVID-19 vaccinations, please book yourself in to get these. It's really important we get our health workforce protected. And if you know anyone in Group 3, any of your friends, whānau, extended networks that you know haven't yet availed themselves and booked for that COVID-19 vaccine, please encourage them to email covid19@cdhb.health.nz or call 0800 282 926 and get their booking in the system.

Let's talk about sex

Well, the Sexual Health team to be more precise – this was another highlight for me last week. What a passionate team they are. You'll find the Sexual Health Centre at 314 Riccarton Road, in Upper Riccarton towards Church Corner.

They're a small team but I really enjoyed hearing of the fantastic mahi that they're all doing. There are some very real challenges in our community around sexual health. And they do an amazing job not only in managing a range of infections that people present with, but they also play a huge role in education for our community. All their appointments are free and for urgent issues they can usually see people within 24 hours. It was so great to meet that team. They're friendly and provide sexual health care that is client-focused and culturally appropriate.



Making our system flow

Another highlight last week was at Thursday's Board meeting where a presentation was made on the theme of 'making our system flow'. It highlighted some amazing work that is underway, and by analysing a range of data the team is trying to understand the reasons for the increased demand. Importantly, they are trying to unpick where those bottlenecks are, and what are the things that are hindering flows, so people don't get stuck in hospital waiting to be discharged. The team is looking closely at how we can improve both the care in the community as well as what we can do to keep people well in their home. There are lots of insights coming and follow up actions underway and when there's more detail available I look forward to sharing that with you.



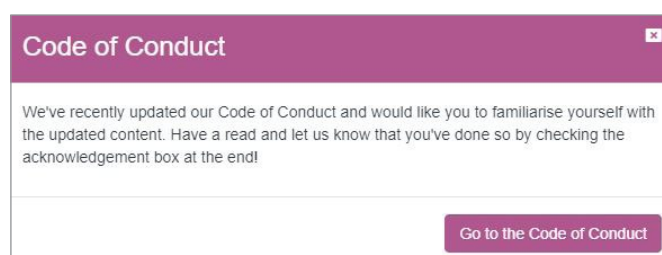
Tāngata Ora and our Code of Conduct

We fast-tracked the refresh of our Code of Conduct following early feedback from Tāngata Ora |Our People Survey. Our updated Code of Conduct is out now, so please have a look at it on max.

Next time you log on to max., you'll see a pink 'pop up' box.

We ask that you follow the prompts, review the Code of Conduct and check the box to show you've read and understood the content.

Doing the Right Thing: Our Code of Conduct is designed to support you in your role, and to make Canterbury DHB a better place to work. You'll enjoy your team and you'll enjoy your day, if we're all living those values together.



The last word

I'm out to Waimakariri this week. I'm looking forward to catching up with our Rural Services teams, particularly out at Oxford and Rangiora, so I'll let you know what I discover in my next update.

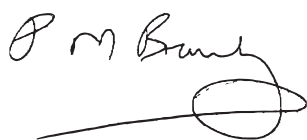
So, take care everyone this week. It's a busy season, it is winter. Keep looking after each other and a huge thank you again for all of the things that you're doing every day to make this health system do its best job. Thanks very much.

Finally thank you to those of you who have been and will be supporting colleagues and teams on the West Coast. The floods have been devastating, and we know the recovery process will be a long one.

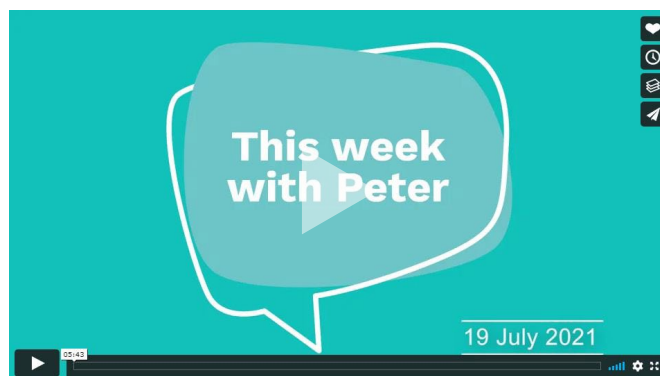
We've had staff working as part of the Emergency Operation Centre all weekend, while a range of clinical and emergency response staff travelled across to the Coast on Sunday to relieve staff on the Coast who are now facing the reality of what lies ahead in terms of damaged properties and insurance processes.

They will need all our support to get through this.

Take care



Peter Bramley, CEO
Canterbury District Health Board



Click [here](#) to watch the This week with Peter video

Please email us at AskPeter@cdhb.health.nz you have any questions for Peter.

If you have a story idea or want to provide feedback on *CEO Update* we would love to hear from you! Please email us at communications@cdhb.health.nz. Please note the deadline for story submissions is midday Thursday.

If you're not a staff member and you want to subscribe to receive this newsletter every week please [subscribe here](#).



Bouquets

Katie Wheatley, Urology Outpatients

Clinical Nurse Specialist Katie Wheatley in Urology Outpatients was very professional. She covered a wide range of topics and concerns and explained them easily to me and my wife. We left the appointment feeling less stressed, less worried and more positive about what would happen in the shorter term. Kate's knowledge is unquestionable and her patient/customer skills unbeatable. Her calm and steady nature relaxed and reassured us, and answered all queries we had, at a time when things were pretty stressful and overwrought. I would like Kate's manager and the hospital manager to know how impressed we were with Kate, and how much respect we have for her, doing a perfect job, in an area some nurses might find off-putting.

Child Health services, Christchurch Hospital

Went in today for our 10-year old boy to get a blood test. The whole experience was fantastic. Having had blood taken at a medical centre, he was initially nervous and stressed about the pain. But thanks to the lovely Play Assistant Diane, and the Emla patches, he was distracted, and the pain was a non-event. We were surprised that the whole procedure was over so quickly, no tears, and hassle free. Two thumbs up from our boy!

Big Shout Out

To: Fuschia Mutu, Hospital Aide, Ward A5, Christchurch Hospital

Congratulations to Fuschia for achieving the vote for the best kept IV trolleys of the week. Hospital Aide Francine Soper and the other Ward A5 staff help to maintain three trolleys in the ward, which ensures a high standard.



From: Jill Rodricks, Clinical Nurse Specialist, Infection Prevention and Control Service and Elizabeth Culverwell, Clinical Nurse Consultant Vascular Access

#carestartshere

Community Dental Service

Everyone at the Woolston Community Dental Clinic was lovely and I want to share my positive feedback.

Acute Assessment Unit (AAU), Theatre, and Post Anaesthetic Care Unit (PACU), Christchurch Hospital

Just wanted to say a big thanks to all the staff involved in my son's care. Starting in the AAU, through to Theatre and onto PACU, the transitions were slick, and everyone was friendly and accommodating. Special mention to nurse 'Row' who provided exceptional care in PACU. Your kindness and compassion didn't go unnoticed.

Ward B8, Christchurch Hospital

I spent a week in Christchurch Hospital and the care that I got was amazing. Everyone did their job and the communication was fantastic. Every staff member was polite and caring. Such a good experience. I wish to say a huge thanks.

Emergency Department (ED), Christchurch Hospital

I want to acknowledge all the staff/nurses/doctors who helped me. I walked into ED Christchurch hospital very unwell. I was attended to very fast and was diagnosed within a few hours. Everyone I met was really nice, and I couldn't have asked for better care. So just a big thanks to all. I'm now recovering and feeling heaps better.

Ward 11, Christchurch Hospital

Thank you to all the Ward 11 staff who looked after me on recent week-long stay. You were all so very nice.

Wendy Chamberlain, Registered Nurse, Day surgery, Christchurch Women's Hospital

Such an efficient, calming, professional experience today at Christchurch Women's Hospital, taking my 91-year-old mother in for her cataract operation. Registered Nurse Wendy Chamberlain was so great. I just had to pass on my appreciation of her empathy and professionalism. Mum has mild dementia and can get muddled and anxious. Wendy was great, taking her time to be thorough.

Urology, Christchurch Hospital

I have been coming to Christchurch Hospital and all I can say is how wonderful the doctors, nurses and WellFood staff are.

Dental Pain Clinic, Christchurch Hospital

The clinic has the most amazing, friendly service. Everyone is just so nice. Thank you, for this amazing service.

Intensive Care Unit, (ICU), Christchurch Hospital

Thank you for taking good care of my boyfriend in ICU.

Jaramey Mark, Telephonist/Receptionist, Christchurch Hospital

I would like to acknowledge Jaramey at the front desk. The perfect person for the job, so happy and pleasant to deal with. Keep him on, Thank you.

Nicola Stuart, Physiotherapist, Hand Therapy, Christchurch Hospital

Huge thanks to Nic Stuart for her expert professionalism in helping me with my broken wrist. It was much appreciated.

Respiratory Services, Christchurch Hospital

Doctors, nurses and technicians who test are great. Put you at ease, explain, have great rapport and understanding if you need to cough. Thanks, very encouraging, motivating and reassuring when you are worried. The way you provide information gives control back to people.

Emergency Department (ED) and Ward B8, Christchurch Hospital

The doctors, nurses, admin personnel and ancillary staff displayed standards of expertise and care of the highest order. In addition, the facilities in the new block made what could have been a stressful occasion, a location that could only aid in one's recovery. The nurses, the first point of contact on the ward, without exception, provided a level of care befitting their profession.

Nuclear Medicine, Christchurch Hospital

I would like to compliment each staff member I was associated with. Everyone was just so lovely, explaining things to me when I asked questions and the whole procedure was super-efficient.

Well done to all. I consider myself extremely fortunate to have access to such a great health system.

Hospital and area not specified

No improvements could better this establishment. Its perfection as it is. Wonderful.

Big Shout Out

To: Medical Illustration

We would like to say a big thank you to the team at Medical Illustration for the amazing job they have done in helping us to develop resources for the Care Capacity Demand Management (CCDM) programme. Thank you for your patience and sharing your expertise with us. We're looking forward to showing off your latest great work.

From: The CCDM team

#carestartshere

Hyperbaric Unit accredited for training

The Christchurch Hyperbaric Medicine Unit, Te Whare Hau o Te Hau Ora, has been accredited for advanced training in Diving and Hyperbaric Medicine by the Australian and New Zealand College of Anaesthetists (ANZCA).

Accreditation means the unit can finally train medical specialists in Diving and Hyperbaric Medicine and is important for the sustainability of the national service, says Clinical Director Greg van der Hulst.

The unit at Christchurch Hospital is one of only two in New Zealand, and, alongside the Slark Hyperbaric Medicine Unit at Waitemata DHB, provides hyperbaric oxygen therapy services for acute and elective conditions for all New Zealand.

"The approval from the ANZCA means Christchurch now joins the five Australian Hyperbaric Units that are already accredited for training by ANZCA. It's an exciting milestone in the history of our department."

Over the years, permanent medical, nursing and technical staff were intermittently recruited but there were no accredited training positions in Diving and Hyperbaric Medicine for medical, nursing or technical trainees in New Zealand, Greg says.

"Without the ability to train the next generation of Diving and Hyperbaric physicians, technicians and nurses, small subspecialised areas like this tend to lurch from one staffing crisis to the next."

Fortunately, Christchurch Hospital's Emergency Department developed subspecialisation Fellowship positions, including one for Diving and Hyperbaric Medicine around the same time ANZCA training accreditation was achieved.

"The current Hyperbaric Fellow in Christchurch is Kenneth Lo and the positive benefits of this are already apparent with sharing of knowledge and an injection of enthusiasm and new ideas for research," Greg says.

The Hyperbaric Unit has also recently developed a training position for a Hyperbaric Technician, another first for New Zealand.



From left, Clinical Director Christchurch Hyperbaric Medicine Unit Greg van der Hulst and Hyperbaric Fellow, Kenneth Lo
Absent: Hyperbaric Medicine Unit Training Supervisor Roxanna Sadri

The subspecialty of Diving and Hyperbaric Medicine (DHM) has two main areas; Diving Medicine which is mainly involved in the prevention and treatment of diving-related injury, and Hyperbaric Medicine, the treatment of specific medical conditions with hyperbaric oxygen.

"Diving and Hyperbaric medicine in the South Island of New Zealand began in Christchurch in 1973 with a trial of hyperbaric oxygen (HBOT) to enhance radiotherapy for patients with head and neck cancers."

It was also used to treat acute problems such as decompression sickness and carbon monoxide poisoning.

"In the late 1970s, the local diving community raised the money for a dual-lock chamber which was donated to the North Canterbury Hospital Board," Greg says.

This operated at The Princess Margaret Hospital from 1979 to 1994. The following year the chamber moved to Christchurch Hospital, allowing better access to core services such as Radiology and Intensive Care. In November 2000, the old chamber was replaced with a new, rectangular, walk-in chamber and permanent staff were appointed.

This was all achieved during the 30-year tenure of Michael Davis as Hyperbaric Medical Director, realising a goal set back in the early 1980s to establish the Christchurch unit as a comprehensive hospital-based hyperbaric facility.

New X-ray machine for the Chatham Islands

Imagine you have a kina spike embedded in your skin and the local hospital's X-ray machine can't show its location for proper removal.

That was the situation before the delivery of a new x-ray machine which takes "beautiful, clear pictures", says Chatham Islands Health Centre Charge Nurse Manager Sally Lanauze.

Kina spike injuries are common on the Chathams, caused when handling the popular seafood. The spikes of the native sea urchin are fibrous, fine and soft with very sharp points and they may appear to be gone but can remain in the deeper layers of skin.

"We had one case recently where a person had a kina spike in their finger. It couldn't be picked up on the old X-ray machine but was found by an image from the new machine.

"It was then able to be removed on the island and the patient X-rayed again to confirm full removal. This meant the patient didn't need to be sent off the island," she says.

In true Chathams style, the new X-ray machine has been named 'Carol' after a passer-by, shop-owner Carol, noticed Healthcare Assistants Sue Lanauze and Debbie Whittaker-Prenderville struggling to unpack the "very well packed" machine.

"Carol had some screwdrivers in her car so gave them a hand," Sally says.

Acting X-ray Team Leader Henri Nelis says the old equipment on the Chathams was failing and the technology nearing the end of its life.

"We were able to purchase a brand-new digital mobile to replace the old machine. This new mobile machine will allow staff to take X-rays quicker, with better detail, and with less dose to the patient."

Sally says the new machine will greatly improve the X-ray ability and delivery of care on the Chatham Islands. A radiographer from Christchurch set up the machine and trained staff.



From left, Healthcare Assistants Sue Lanauze and Debbie Whittaker-Prenderville unpacking the new X-ray machine



Rear, from left General Practitioner Harpal Sandhu-Singh, Healthcare Assistants Wendy Smith and Sue Lanauze, Trainee Intern Sam Lloyd, Healthcare Assistant Debbie Whittaker-Prenderville, Registered Nurses Eva Donaldson and Steve Summers, Administrator Theresa Harris and front, seated, Charge Nurse Manager Sally Lanauze

Māia Foundation Maternity chair fundraising update

Joeann Pagulayan is supporting Māia's fundraising appeal for Maternity chairs, because she knows the difference that a lie-flat sofa chair will make.

Joeann works as a nurse at Christchurch Women's Hospital, with most of her time spent on Level Five – looking after new mums and babies.

"It's such a precious time for a new family and I want every new family to be able to be together, comfortable and safe," says Joeann.

Joeann's husband Mark was by her side when she was admitted to Christchurch Women's Hospital last July after the birth of daughter Matilda. Mark slept on a mattress on the floor.

"He just wanted to be there for me – no matter how uncomfortable his stay was!"

Joeann is from the Philippines. She says in her culture, and many Asian cultures, a husband, partner or support person is expected to stay with a new mother.

"As a nurse I feel really bad for those mothers who don't have a support person to stay with them overnight. I see how difficult it can be for many new mums."

Read Joeann's first-hand experience as a nurse, and a new mum on the Māia Foundation website [here](#).

Please, help Māia to gift it forward to our newest families by donating [here](#).



Joeann Pagulayan and her daughter Matilda

Scan. Scan. Scan.

Everywhere you go, everywhere you can.

Have you scanned in at work today?
Scan in to every DHB building you enter
with the **COVID-19 Tracer App**.

Unite
against
COVID-19



One minute with... Jo Domigan, Head of Equity, Recruitment and People Partnering

What does your job involve?

I work within People and Capability and alongside some really awesome colleagues. We are responsible for Recruitment, Equity and Diversity, Organisational Development, Learning and Business Partnering. Together we hire new people, develop our organisation's leadership and behavioural offerings; lead Tāngata Ora; try to grow and better serve our Māori and diversity workforce; and partner with senior leaders in the business to tautoko them as they run their services.

Why did you choose to work in this field?

Because I love people, I am passionate about excellent leadership and people being treated really well, and I am dedicated to honouring Te Tiriti in all that I do.

What do you like about it?

I love seeing people being delighted and getting great outcomes – be it a new job, a new skill, a repaired relationship or a new team structure that really helps our kaimahi to do the best work they can.

What are the challenging bits?

This is a large, complex organisation and there is so much work to do! We have had quite a lot of change in the people team lately, so we are rebuilding, reprioritising and really working hard to improve the way we awahi both DHBs.

Who inspires you and why?

Is it cheesy to say my husband? He's just so kind, and reasonable, and always listens well and treats everyone he encounters with respect.

What do Canterbury DHB's values (Care and respect for others, Integrity in all we do and Responsibility for outcomes) mean to you in your role?

They mean an awful lot and underpin everything that we do as a People team.

Something you won't find on my LinkedIn profile is...

On LinkedIn you see the roles I have been fortunate enough to have but what you don't see is an incredibly supportive husband and wonderful nanny behind the scenes who make sure I get to work on time (usually in clean clothes), and who ensure that our precious kids are so well taken care of.



If you could be anywhere in the world right now it would be...

I'm so grateful to be in New Zealand in these COVID-19 times, but that aside I would be sitting poolside at a luxurious family resort in Fiji with a delicious cocktail.

What do you do on a typical Sunday?

We attend church as a family, usually followed by a nice lunch out somewhere and having a family day. The rest of the week is so busy with work, school, preschool, playgroups, piano lessons, dance classes, rugby games, etc that Sunday we like to slow it right down and just have fun together.

What's your favourite food?

Greek or Mexican food.

And your favourite music?

I can't remember what kind of music I like anymore! My last eight years have been all about The Wiggles, nursery rhymes, 'Music with Michal' and the Peppa Pig soundtrack!

If you would like to take part in the column or would like to nominate someone please contact Naomi.Gilling@cdhpb.health.nz.

Something For You

Something For You is the Canterbury DHB employee benefits programme. The deals offered are from the Canterbury business community to say thank you for all that you do.



The Cosmetic Club

- Christchurch Central & Riccarton

Get 20 percent off skin treatments and laser (this does not include injectables or product).



Accuro Health insurance

Get discounted rates for various insurance options, find link to enquire under the 'Health and Wellbeing' tab.



Envirowaste

Special rates off Envirowaste skip hire - call up and quote CDHBEMP as your order number to redeem.



Top in Town

- 91 Riccarton Rd, Riccarton

Get 10 percent off all of the menu (includes buffet) and 15 percent off all group bookings, of four or more people.

We also have plenty of other great deals from local businesses, check them out [here](#)!

Health Delivery Research Grants and Awards applications open

A second round of the Health Research Council's Health Delivery Research Activation Grants and Health Delivery Research Career Development Awards has recently opened

These opportunities focus on supporting early-stage health delivery research to get up and running, and on providing support for career development for researchers in this space:

- > [Health Delivery Research Activation Grants](#): Up to \$30,000 to get ready for research by establishing health delivery research evidence needs, research opportunities, or research capacity before applying for larger-scale funding.
- > [Health Delivery Research Career Development Awards](#): A development opportunity for clinical or non-clinical health professionals and health researchers to undertake a funded research placement.

The registration deadline for both rounds is 1pm, 12 August, with an application deadline of 1pm, 2 September.

If you require any further information, please don't hesitate to get in touch with Suzy Botica, Senior Communications Advisor, Health Research Council of New Zealand, at sbotica@hrc.govt.nz (+64 9 200 1522) or Luke Garland, Research Investment Manager, Health Delivery at lgarland@hrc.govt.nz.



**Health
Research
Society of
Canterbury**

Poster Expo 2021

Thursday 5th August 5:30–7:30pm

**Hosted by Te Papa Hauora at
Manawa in the Health Precinct
276 Antigua St**



Pizza and refreshments provided

Entry free to HRSC members

Health Research Society of Canterbury annual membership fee is \$20/\$10.

Join on the night using VISA, or join NOW at <http://www.hrsc.org.nz/>

Prizes for Best Student and Early Career posters

(To be eligible you must be present at your poster during judging)

To register a poster:

A/Prof Steven Gieseg steven.gieseg@canterbury.ac.nz

Please include 'HRSC Poster Registration' in the subject line, with title, affiliation (Dept and Institute), and name of the presenter.

For further information contact:

Dr Tracy Melzer: tracy.melzer@otago.ac.nz

THROWING AWAY EXPIRED PRODUCTS?

CHECK AGAIN!! WE CAN REPURPOSE THEM FOR TRAINING AND SIMULATION

Here at the Manawa Simulation Centre, we are committed to reducing our impact on the environment by trying to reduce waste and repurpose as many expired goods possible for training and simulation practices.

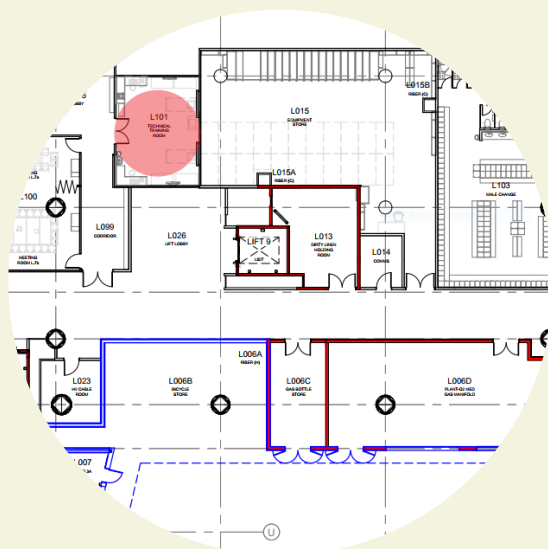
If you wish to leave your expired products with us, please leave them at the **Waipapa Training Room** on the **Lower Ground Floor** in the **Waipapa Building**. There will be a box clearly labeled for your goods that you can leave them in.

Products we WILL accept:

Needles, Syringes, IV Fluids, Giving Sets, and other common consumable items.

Products we WILL NOT accept:

Items/goods that aren't currently in circulation around the hospital.



Otago Winter SYMPOSIUM

An astonishing year for
vaccine development

With Professor David Murdoch

Wednesday 28 July, 6pm
University of Otago, Christchurch

Register now
otago.ac.nz/winter-symposium



Matisse RSV Vaccine in Pregnancy Study



**You'll give them love in lots of ways.
Could protection from RSV be one of them?**

RSV is known to cause common illnesses of the airways.
It is the most common cause of bronchiolitis (inflammation of the small airways)
and pneumonia (infection of the lungs) in children under 12 months.

Eligible women will be:

- Aged between 18 - 49 years
- Healthy and expecting a single healthy baby
- Vaccination occurs between 24 and 36 weeks.

Women participating in the study will receive reimbursement for time and travel.

LMC's will be reimbursed for taking the study bloods at birth.

Taking referrals now.

Contact Research Midwife: Di Leishman

Email: di.leishman@otago.ac.nz Phone 3644631

More information available on URL: rsvvaccinestudy.com



SEXUAL HEALTH SEMINAR



WEDNESDAY, 11 AUGUST, 2021
FROM 1.00PM – 4.30PM

Burwood Hospital, Burwood Rd/Mairehau Rd,
Rooms 2.3 A and B, Main Building

1.00pm – 2.00pm WELCOME

Time to catch up with work we are currently involved in, to share information, projects planned, new resources and training opportunities.

2.00pm – 3pm

YOUNG PEOPLE AND HEALTHY RELATIONSHIPS, EMERGING TRENDS IN AN INCREASINGLY DIGITAL WORLD

Melanie Beres, Associate Professor in Sociology, University of Otago

My core area of interest is in sexual violence prevention. In particular I am interested in understanding how people give consent to sex, and how we might be able to use this information to develop effective educational programming. I am also interested more broadly in constructions of sexuality including queer sexualities. I engage with both qualitative and quantitative methods.

3.00pm – 3.30pm AFTERNOON TEA

3.30pm – 4.30pm SEXWISE – HEALTH EDUCATION SHOW

Presenters: Julian, Daedae and Rose – Sexwise Actor Facilitators

A show for Years 9-13, focussing on decile 1-6 High Schools as well as Māori and Pasifika communities. Sexwise enables youth to gain current, accurate information about sexuality and healthy relationships in an engaging workshop environment. Proudly presented by the Theatre in Education Trust – THETA.

4.30pm

CLOSING

Zoom option will be available for speakers' presentations. There is no cost for these seminars and afternoon tea will be provided. Let me know if you wish to attend in person or via zoom. **Please RSVP by Friday 6 August**

If driving take Main Entrance (Entry 1) off Burwood Road, plenty of visitor parking available. Main Building, take stairs or lift to 2nd floor, Rooms 2.3A and B.
Bus – Orange Line from City Centre, stops at entrance to Main Building

Diane Shannon, Health Promoter Community and Public Health (a division of Canterbury District Health Board)
P 03 378 6755 E diane.shannon@cdhb.health.nz



How can P3MO help you and Canterbury DHB?

We introduce and support Project, Programme and Portfolio Management best practice. We also enable project, programme and portfolio level reporting.

Have you seen the Project Management Toolkit?

You might find some of the support you need in the toolkit. The toolkit is a growing collection of all tools and resources that support the management of projects across the organisation.

Some of the things you can find in the toolkit are:

- Frameworks - how we do things at Canterbury DHB
- Guides - practical "how to" guides
- Templates - from Business Case to project templates and registers
- Knowledge Centre - from the basics of project management to change management resources, tips and guides

You can navigate to the toolkit directly from the PRISM home page:



Have you heard about the KeyedIn Project Management tool?

KeyedIn is a software tool for project, programme and portfolio management. Currently, significant capital projects are managed and reported on in KeyedIn. Over 300 projects have been loaded into KeyedIn since 2018. Projects are tracked from concept, through planning, implementation and transition to BAU and benefits realisation.

Need assistance? email projects@cdhb.health.nz

The team will provide P3MO support and will answer any questions.