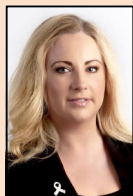


# Canterbury District Health Board

## Electing 7 Board Members

---

---



### **Alexandra DAVIDS**

Results Focused

My principal place of residence is in the Canterbury District Health Board area. I am also standing for the Linwood Ward and the Linwood-Central-Heathcote Community Board (Linwood Ward), Christchurch City Council.

I have been an elected member since 2013. In this time, I have held a variety of positions, including Chair of Keep Christchurch Beautiful, Chair of Keep New Zealand Beautiful, Elected Member of the National Young Elected Members Board, Elected Member of the national Community Board Executive Committee, Trustee of the Graeme Dingle Foundation, Chair of Whitau School and my daily work with Women's Refuge at the Battered Women's Trust.

These experiences have given me the opportunity to continue to develop the leadership and negotiation skills we need around the table within the CDHB for us to make positive steps forward for the entire Canterbury region.

I am a proactive, results-focussed candidate with the enthusiasm and energy needed to effect positive change.

As your elected representative I aim to strongly advocate for a parking solution for Christchurch Hospital, more support for mental health and chlorine free water.

#### *Conflict of Interest Statement*

To the best of my knowledge and belief, I have no conflicts of interest with the Canterbury District Health Board (CDHB) at the date of my notice of consent to being nominated as a candidate for membership of the board of the CDHB, and I do not believe that any such conflicts of interest are likely to arise in future.