

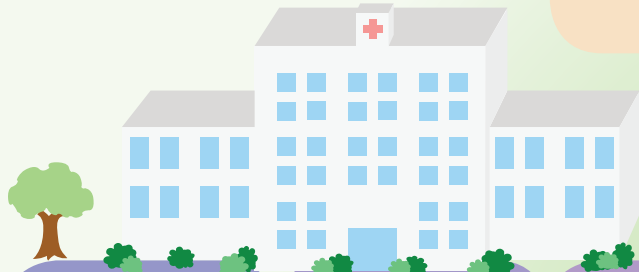
ADDITIONAL NOTES:



THE ROAD TO HOME

Women's & Children's Health Division
2 Riccarton Ave
Private Bag 4711
CHRISTCHURCH
Tel: (03) 364 4885 (Int 85885)
Fax: (03) 364 4883 (Int 85883)

You will be taking your baby home soon!



How do you feel your baby's progressing?

Do you need an update on your baby's condition?

Have you decided how you are going to feed your baby?

Have you got all your baby gear ready?

Baby Cues

Baby bathing



Cuddle times

Are you still in contact with your midwife?

Immunisation information

Have you nominated a GP?

Breastfeeding - do you need to see a lactation consultant?

Safe sleep information been given?

Continue gaining confidence in handling your baby

Ongoing health issues addressed

Have you met the physio? Developmental assessment done?

If baby is breast-feeding, have you arranged a breast pump to use post discharge?



Please ask for written information and feel free to discuss any of these and other items



If baby is bottle feeding, do you know how to make up the formula?

Have you been shown how to give your baby medicines?

Has the Newborn Hearing Screening been done?

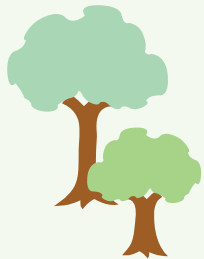
CPR Training

Feeding - is your baby no longer having tube feeds?

Car seat test

Rooming in

Baby check by the registrar/nurse specialist



Ready to go home!



Collect scripts and bring back breast pump. Collect frozen milk.

Well Child book completed

Have you met the Outreach Nurse?